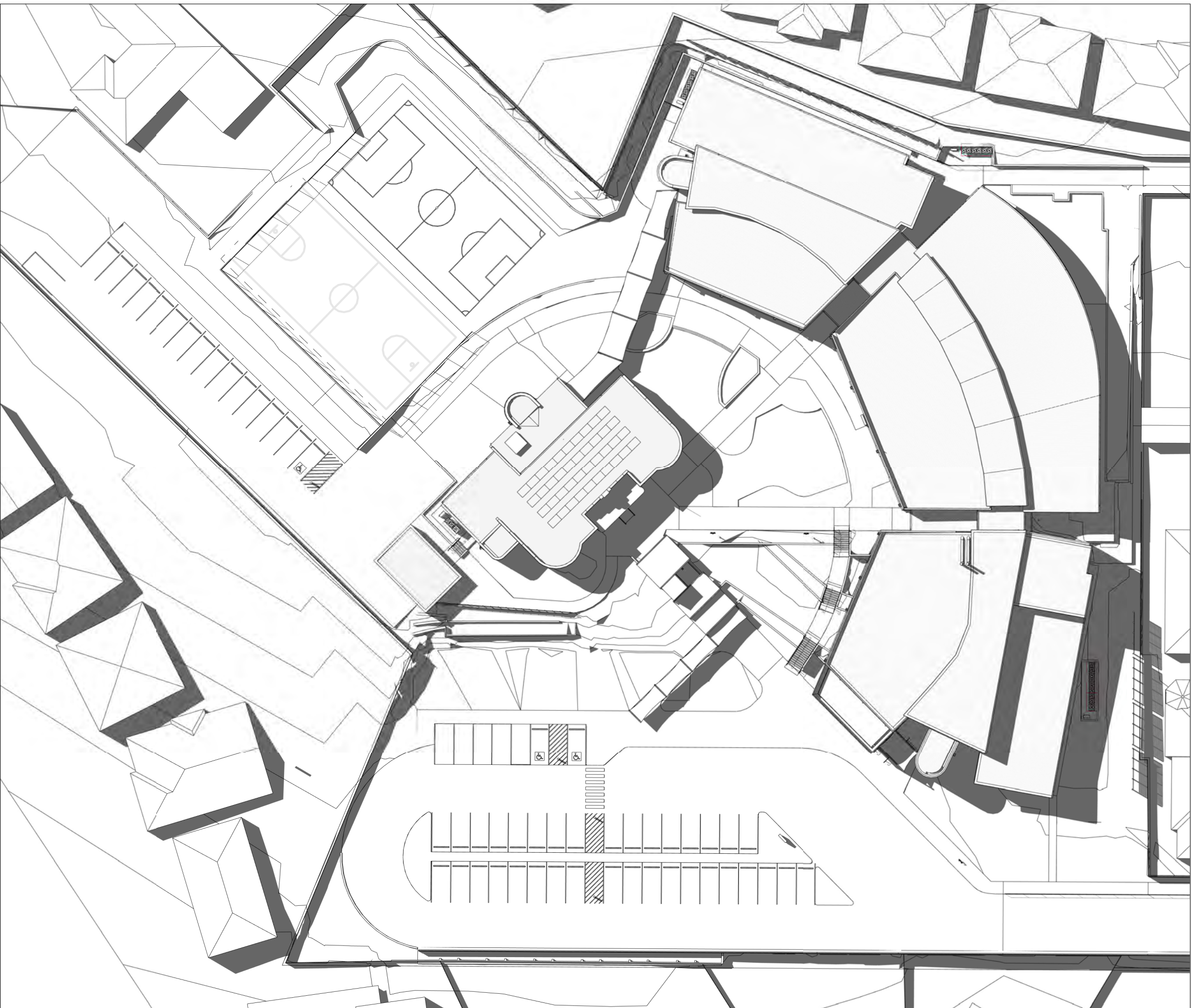
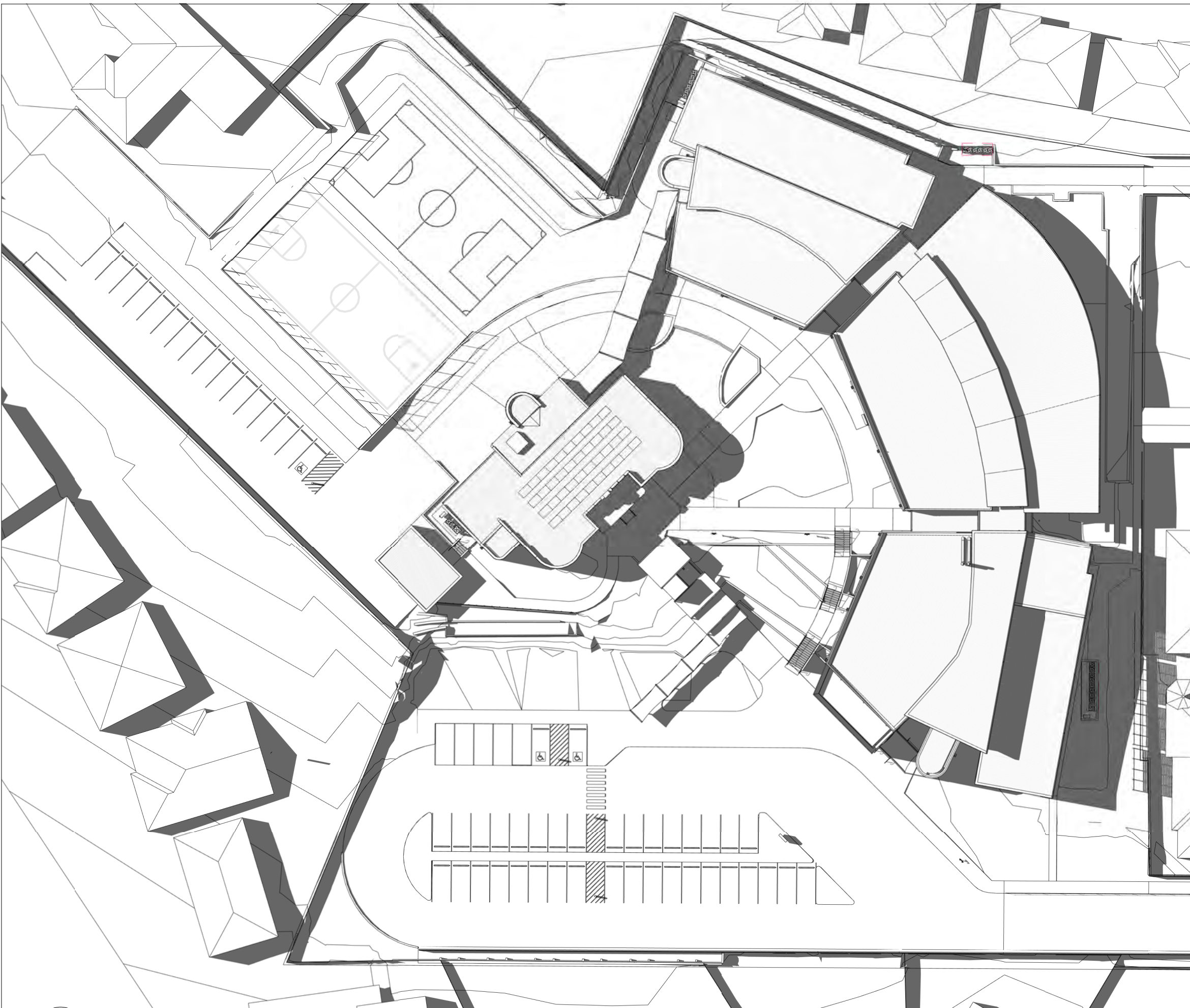


1 SEPTEMBER EQUINOX 1PM



2 SEPTEMBER EQUINOX 2PM



3 SEPTEMBER EQUINOX 3PM

COPYRIGHT © MUNNS SLY MOORE ARCHITECTS 2015
Reproduction of the whole or part of the document constitutes an infringement of copyright. The information, ideas and concepts contained in this document are confidential. The recipient(s) of this document is/are prohibited from disclosing such information, ideas and concepts to any person without the prior written consent of the copyright holder.

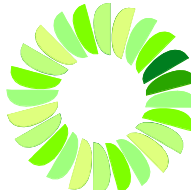
- NOTES
1. Use figured dimensions. Do not scale from drawings.
 2. All dimensions are in millimetres, except levels and drawings to scale of 1:500 and smaller which are given in metres.
 3. Drawings to be read in conjunction with specifications and/or schedules.
 4. Contractor to verify all dimensions and levels on site prior to commencing any work or making of shop drawings, and seek instructions if any discrepancies are found.

2	12/12/2017	UPDATE FOR S.E.E (DA)
1	16/06/17	ISSUE FOR DA APPROVAL
NO.	DATE	DESCRIPTION

STRUCTURAL + ENVIRONMENTAL



HYDRAULIC + CIVIL



AJ Whipps Consulting Group
2/101 Union St, McMahon's Point
NSW 2060 Australia
t: 61 2 8923 8444
f: 61 2 8923 8484
sydney@ajwhipps.com.au
ajwhipps.com.au

Where ingenuity flows

BUILDING SERVICES



Level 21, 101 Miller Street,
North Sydney
NSW 2060
Australia

+61 (0) 9437 1000
general@jhangreen.com.au
www.jhangreen.com.au

LANDSCAPE ARCHITECT



LANDSCAPE ARCHITECTS PTY LTD
Suite 104, 283 Alfred Street
North Sydney NSW 2060
T 02 9955 6772
www.umbaco.com.au

CLIENT



MUNNS SLY MOORE architects

MUNNS SLY MOORE ARCHITECTS PTY LTD ABN 30 008 534 049
9 Hall Street PO Box 5093 Lyneham ACT 2602 Australia
P + 61 2 6248 8922 F + 61 2 6248 8300
www.munns Sly Moore.com.au

Nominated Architect Robert Sly FAIA ACT #331 NSW #6712

DRAWING

SHADOW ANALYSIS -
PROPOSED SITE - SHEET
4

PROJECT

MARIST COLLEGE
PENHURST - STH
HURSTVILLE SITE
(14C11)

LOT 4 DP 790242 CITY SOUTH HURSTVILLE

DATE 04/26/17 FILE \\MSMA-AD\Redacted\Drawings\Drawings\My Documents\3973_TEN_WF-17_D\Drawings\munns Sly Moore.com.au-rvt

DRAWN CJ CHECKED CJ VERIFIED EI

STATUS FOR INFORMATION

@ A1

PROJECT NO.

3973

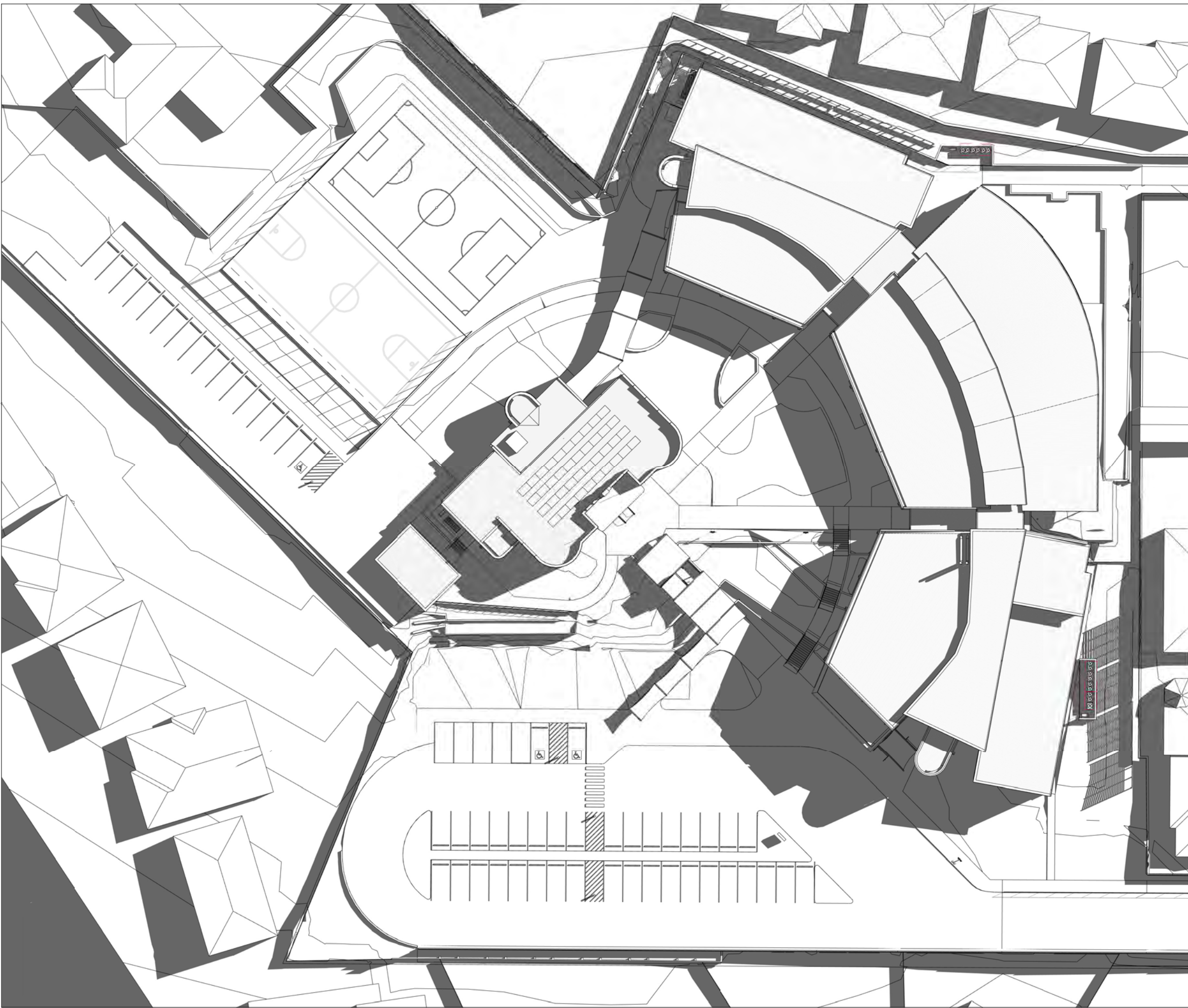
DRAWING NO.

A9014

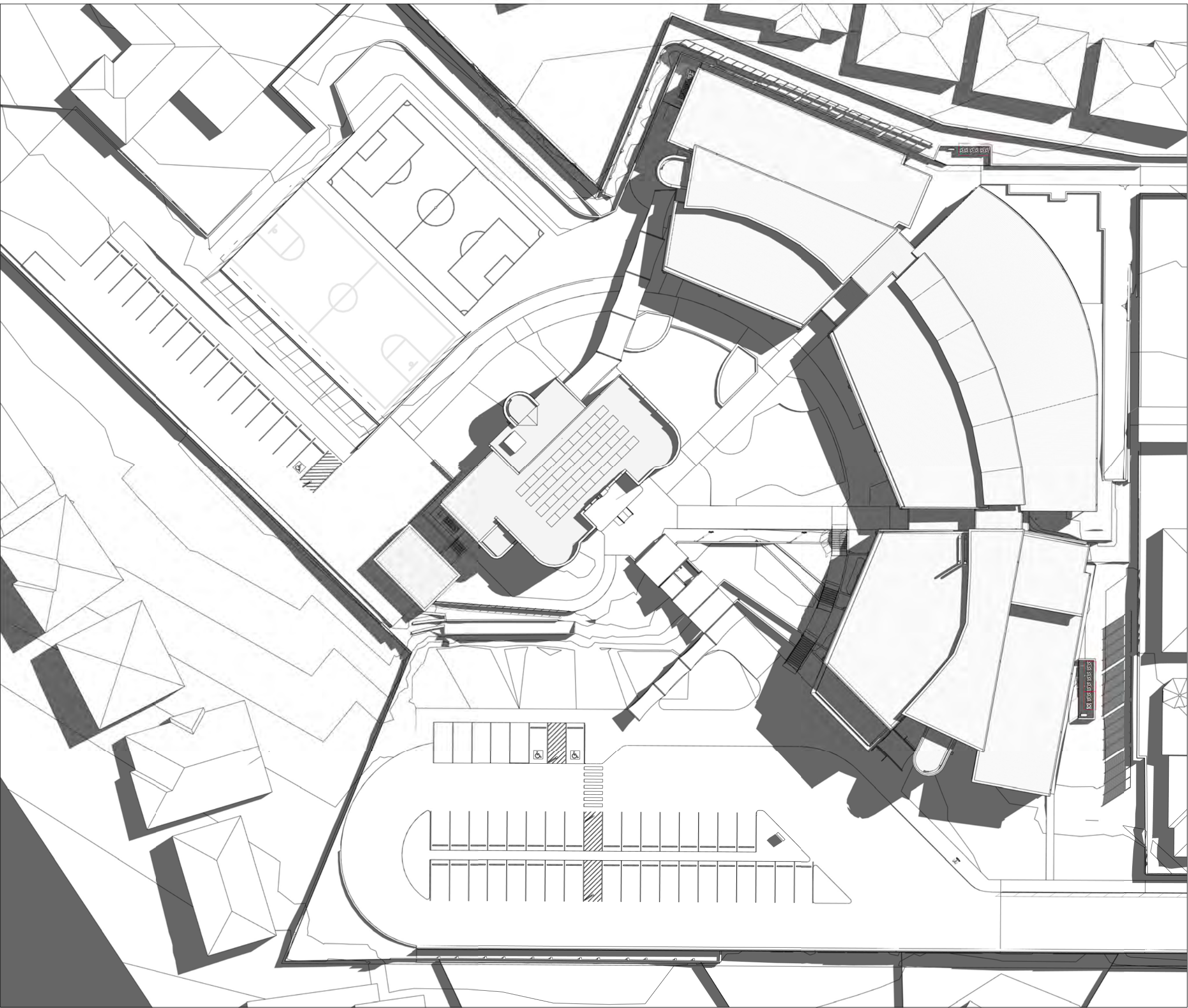
NORTH

REVISION

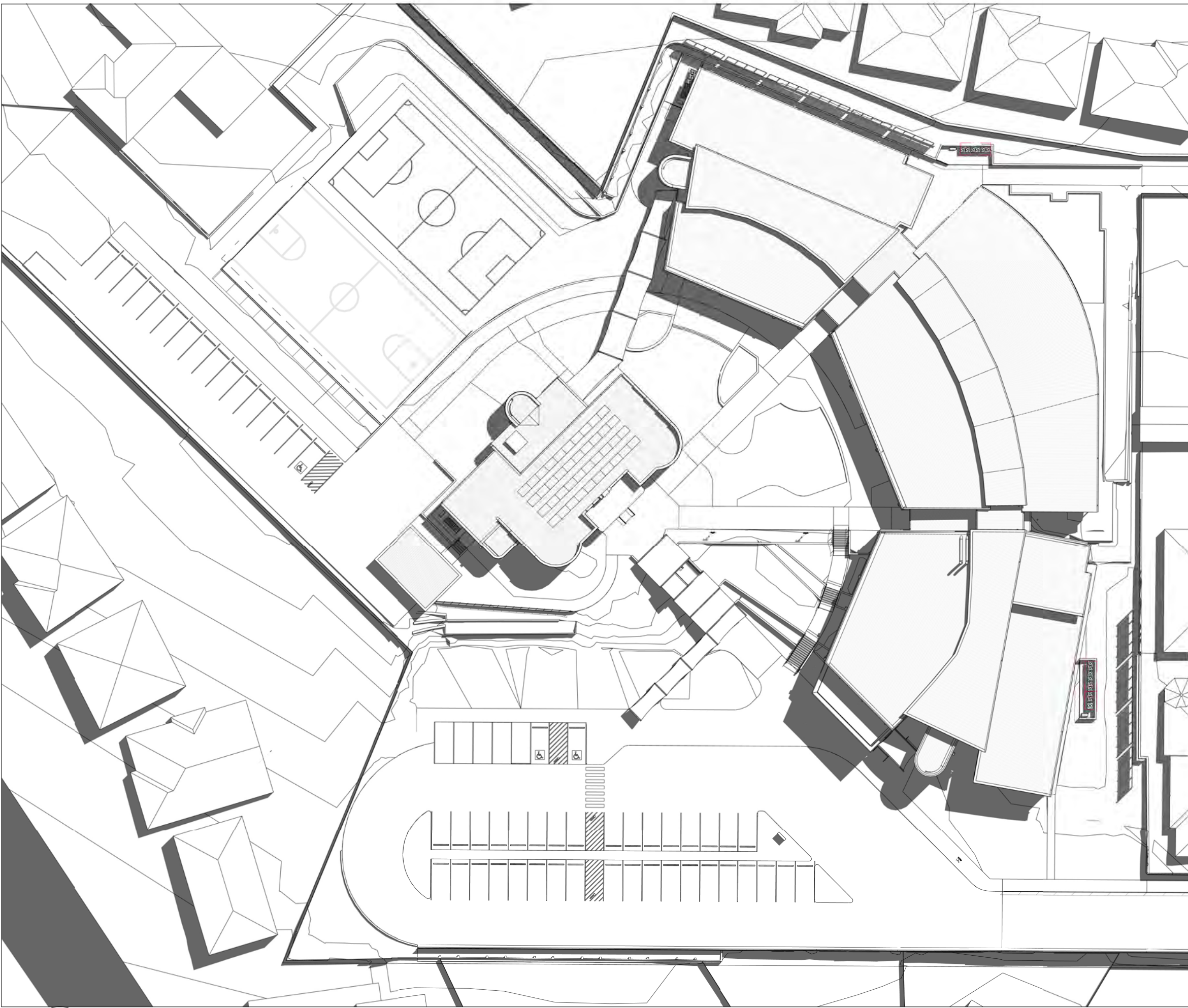
2



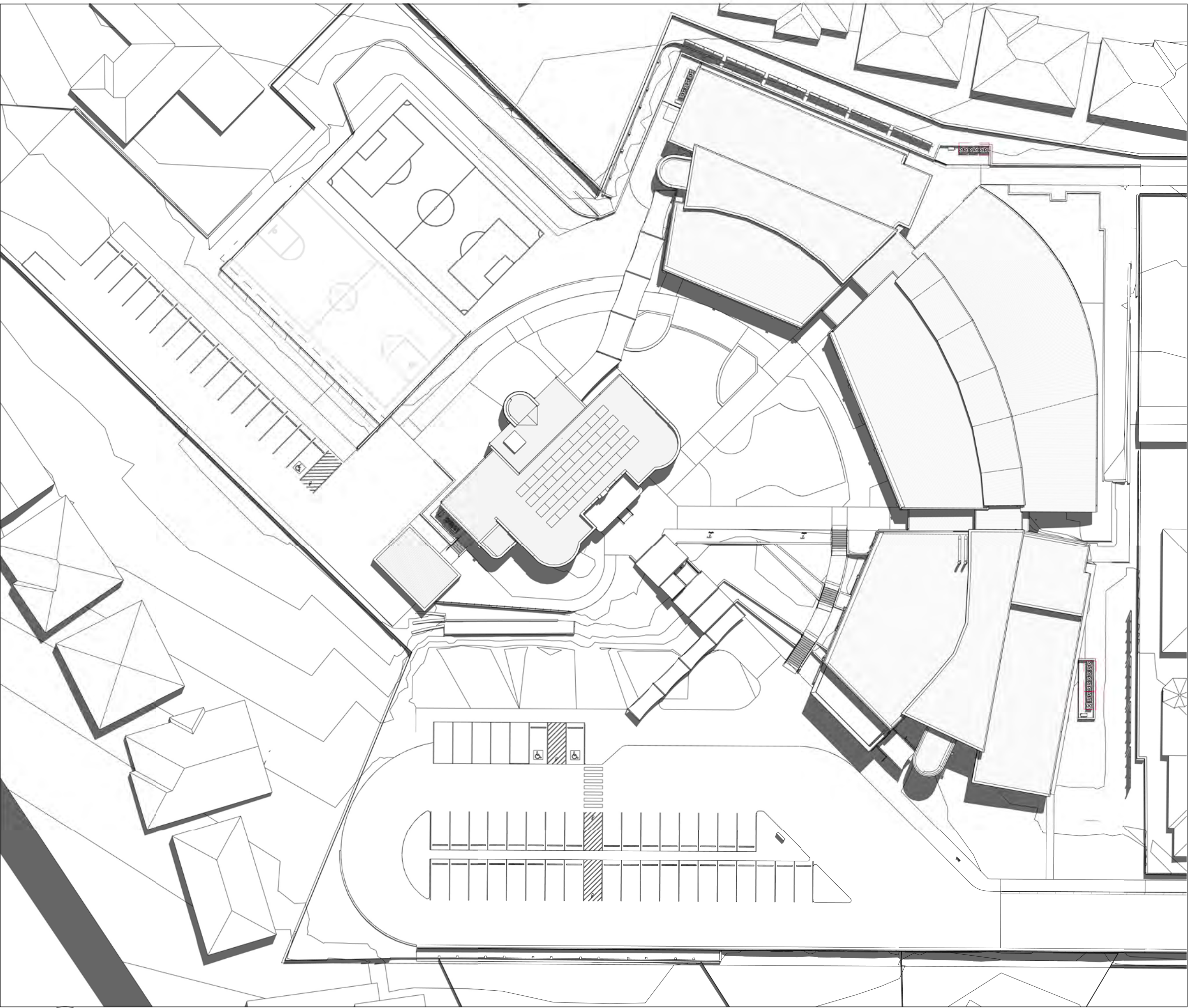
1 SUMMER SOLTICE 9AM



2 SUMMER SOLTICE 10AM



3 SUMMER SOLTICE 11AM



4 SUMMER SOLTICE 12PM

COPYRIGHT © MUNNS SLY MOORE ARCHITECTS 2015
Reproduction of the whole or part of the document constitutes an infringement of copyright. The information, ideas and concepts contained in this document are confidential. The recipient(s) of this document is/are prohibited from disclosing such information, ideas and concepts to any person without the prior written consent of the copyright holder.

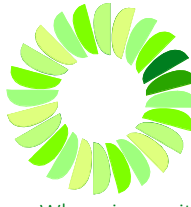
- NOTES
1. Use figured dimensions. Do not scale from drawings.
 2. All dimensions are in millimetres, except levels and drawings to scale of 1:500 and smaller which are given in metres.
 3. Drawings to be read in conjunction with specifications and/or schedules.
 4. Contractor to verify all dimensions and levels on site prior to commencing any work or making of shop drawings, and seek instructions if any discrepancies are found.

2	12/12/2017	UPDATE FOR S.E.E (DA)
1	16/06/17	ISSUE FOR DA APPROVAL
NO.	DATE	DESCRIPTION

STRUCTURAL + ENVIRONMENTAL



HYDRAULIC + CIVIL



AJ Whipps Consulting Group
2/101 Union St, McMahon's Point
NSW 2060 Australia
t: 61 2 8923 8444
f: 61 2 8923 8484
sydney@ajwhipps.com.au
ajwhipps.com.au

BUILDING SERVICES



LANDSCAPE ARCHITECT



CLIENT



MUNNS SLY MOORE architects

MUNNS SLY MOORE ARCHITECTS PTY LTD ABN 30 008 534 049
9 Hall Street | PO Box 5093 | Lyneham ACT 2602 Australia
P + 61 2 6248 8922 F + 61 2 6248 8300

Nominated Architect Robert Sly FAIA ACT #331 NSW #6712

www.munns Sly Moore.com.au

DRAWING

SHADOW ANALYSIS -
PROPOSED SITE - SHEET
5

PROJECT

MARIST COLLEGE
PENSHURST - STH
HURSTVILLE SITE
(14C11)

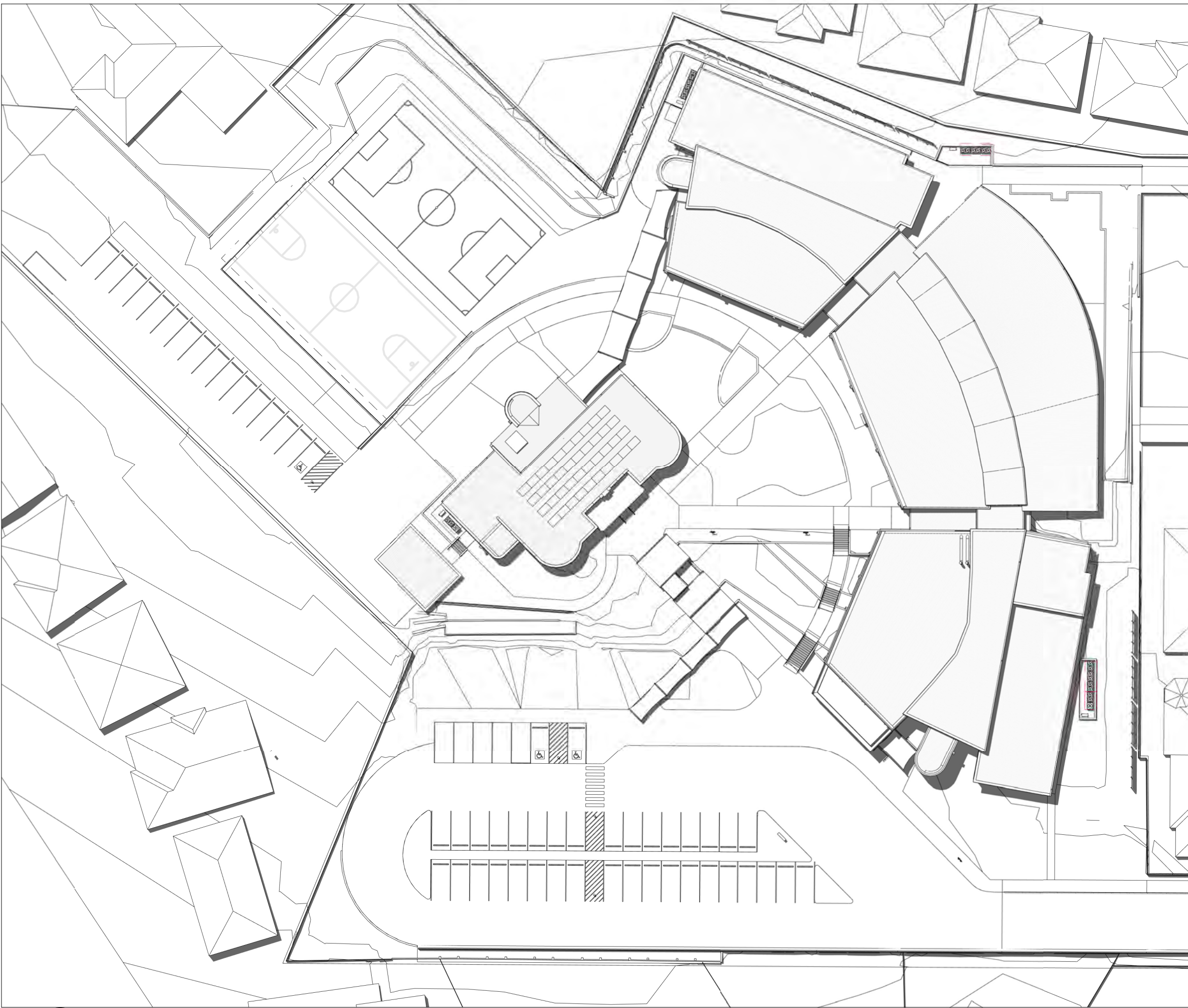
LOT 4 DP 790242 CITY SOUTH HURSTVILLE
DATE 02/12/18 FILE \MSMA-ADD\redacted\drawings\drawings\My Documents\3973_TEN_WF-17_D\drawings\munns Sly Moore.com.au.rvt
DRAWN Author CHECKED CJ VERIFIED EI

STATUS FOR INFORMATION

@ A1

PROJECT NO. DRAWING NO. REVISION

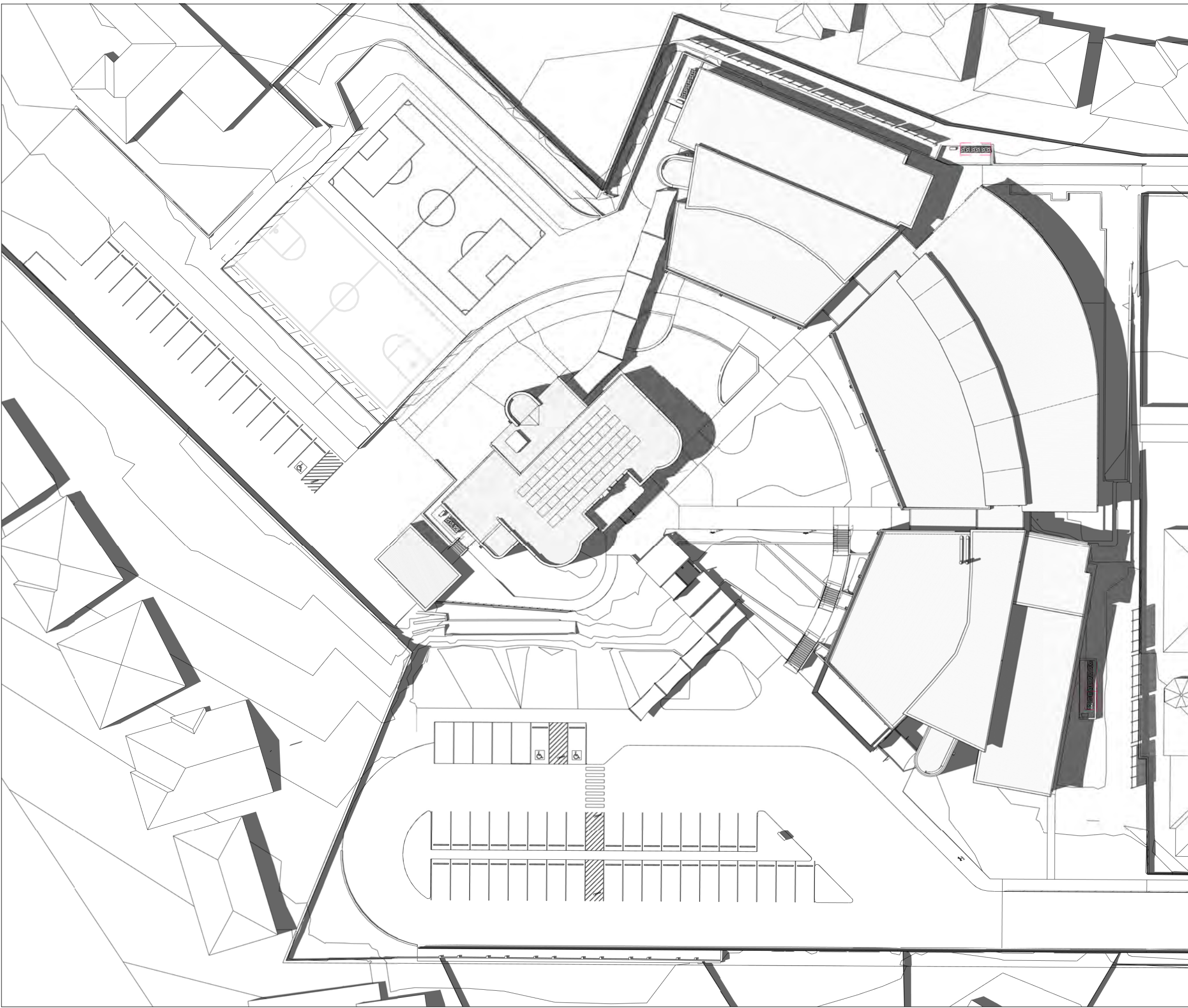
3973 A9015 2



3 SUMMER SOLTICE 1PM



1 SUMMER SOLTICE 2PM



2 SUMMER SOLTICE 3PM

COPYRIGHT © MUNNS SLY MOORE ARCHITECTS 2015
Reproduction of the whole or part of the document constitutes an infringement of copyright. The information, ideas and concepts contained in this document are confidential. The recipient(s) of this document is/are prohibited from disclosing such information, ideas and concepts to any person without the prior written consent of the copyright holder.

- NOTES
1. Use figured dimensions. Do not scale from drawings.
 2. All dimensions are in millimetres, except levels and drawings to scale of 1:500 and smaller which are given in metres.
 3. Drawings to be read in conjunction with specifications and/or schedules.
 4. Contractor to verify all dimensions and levels on site prior to commencing any work or making of shop drawings, and seek instructions if any discrepancies are found.

2	12/12/2017	UPDATE FOR S.E.E (DA)
1	16/06/17	ISSUE FOR DA APPROVAL
NO.	DATE	DESCRIPTION

STRUCTURAL + ENVIRONMENTAL



HYDRAULIC + CIVIL

 AJ Whipps Consulting Group
2/101 Union St, McMahons Point
NSW 2060 Australia
t: 61 2 8923 8444
f: 61 2 8923 8484
sydney@ajwhipps.com.au
ajwhipps.com.au

Where ingenuity flows



LANDSCAPE ARCHITECT

 **Umbaco**
LANDSCAPE ARCHITECTS PTY LTD
Suite 104, 283 Alfred Street
North Sydney NSW 2060
T 02 9955 6772
www.umbaco.com.au



MUNNS SLY MOORE architects

MUNNS SLY MOORE ARCHITECTS PTY LTD ABN 30 008 534 049
9 Hall Street PO Box 5093 Lyneham ACT 2602 Australia
P + 61 2 6248 8922 F + 61 2 6248 8300
www.munnesslymoore.com.au

Nominated Architect Robert Sly FAIA ACT #331 NSW #6712

DRAWING

**SHADOW ANALYSIS -
PROPOSED SITE - SHEET
6**

PROJECT

**MARIST COLLEGE
PENSHURST - STH
HURSTVILLE SITE
(14C11)**

LOT	4	DP	790242	CITY	SOUTH HURSTVILLE
DATE	04/26/17	FILE	\\MSMA-AD\Redacted\Drawings\Drawings\My Documents\3973_TEN_WF-17_D\Drawings\munnesslymoore.com.au.rvt		
DRAWN	CJ	CHECKED	CJ	VERIFIED	EI
STATUS					

FOR INFORMATION

@ A1

PROJECT NO.

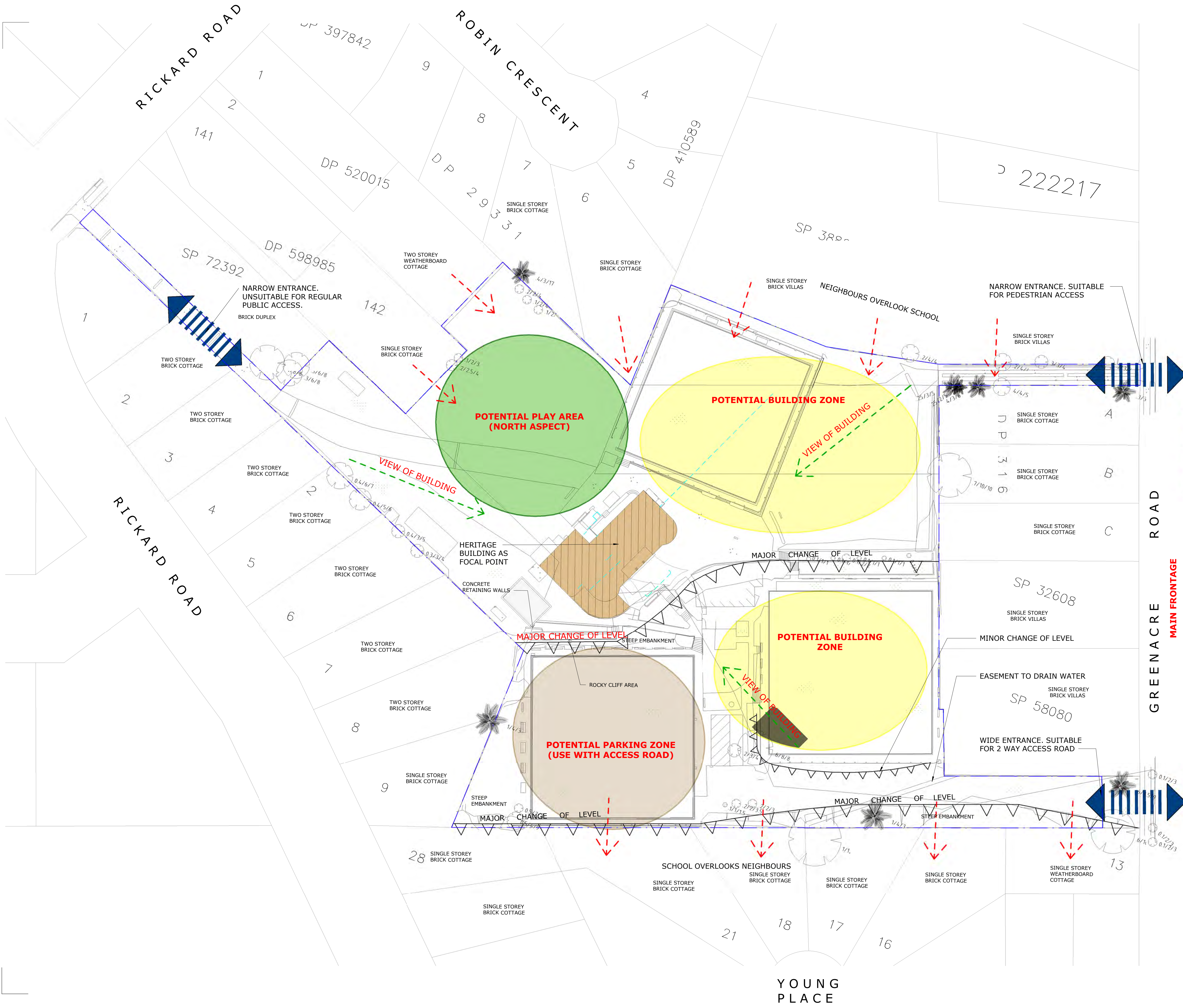
3973

DRAWING NO.

A9016

REVISION

2



COPYRIGHT © MUNNS SLY MOORE ARCHITECTS 2015
Reproduction of the whole or part of the document constitutes an infringement of copyright. The information, ideas and concepts contained in this document are confidential. The recipient(s) of this document is/are prohibited from disclosing such information, ideas and concepts to any person without the prior written consent of the copyright holder.

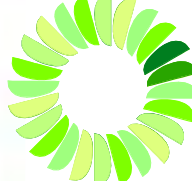
- NOTES
1. Use figured dimensions. Do not scale from drawings.
 2. All dimensions are in millimetres, except levels and drawings to scale of 1:500 and smaller which are given in metres.
 3. Drawings to be read in conjunction with specifications and/or schedules.
 4. Contractor to verify all dimensions and levels on site prior to commencing any work or making of shop drawings, and seek instructions if any discrepancies are found.

3	7/12/17	ISSUE FOR DA
2	16/06/17	ISSUE FOR DA APPROVAL
1	10/02/17	FOR INFORMATION
NO.	DATE	DESCRIPTION

STRUCTURAL + ENVIRONMENTAL

TTW Taylor Thomson Whitting

HYDRAULIC + CIVIL



AJ Whipps Consulting Group
2/101 Union St, McMahon's Point
NSW 2060 Australia
t: 61 2 8923 8444
f: 61 2 8923 8484
sydney@ajwhipps.com.au
ajwhipps.com.au

BUILDING SERVICES



LANDSCAPE ARCHITECT

Umbaco
LANDSCAPE ARCHITECTS PTY LTD
Suite 104, 283 Alfred Street
North Sydney NSW 2060
T 02 9955 6772
www.umbaco.com.au

CLIENT



MUNNS SLY MOORE architects

MUNNS SLY MOORE ARCHITECTS PTY LTD ABN 30 008 534 019
9 Hall Street | PO Box 5093 | Lyneham ACT 2602 Australia
P + 61 2 6248 8922 F + 61 2 6248 8300
Nominated Architect Robert Sly FAIA ACT #331 NSW #6212 www.munns Sly Moore.com.au

DRAWING

**SITE ANALYSIS -
OPPORTUNITIES &
CONSTRAINTS**

PROJECT

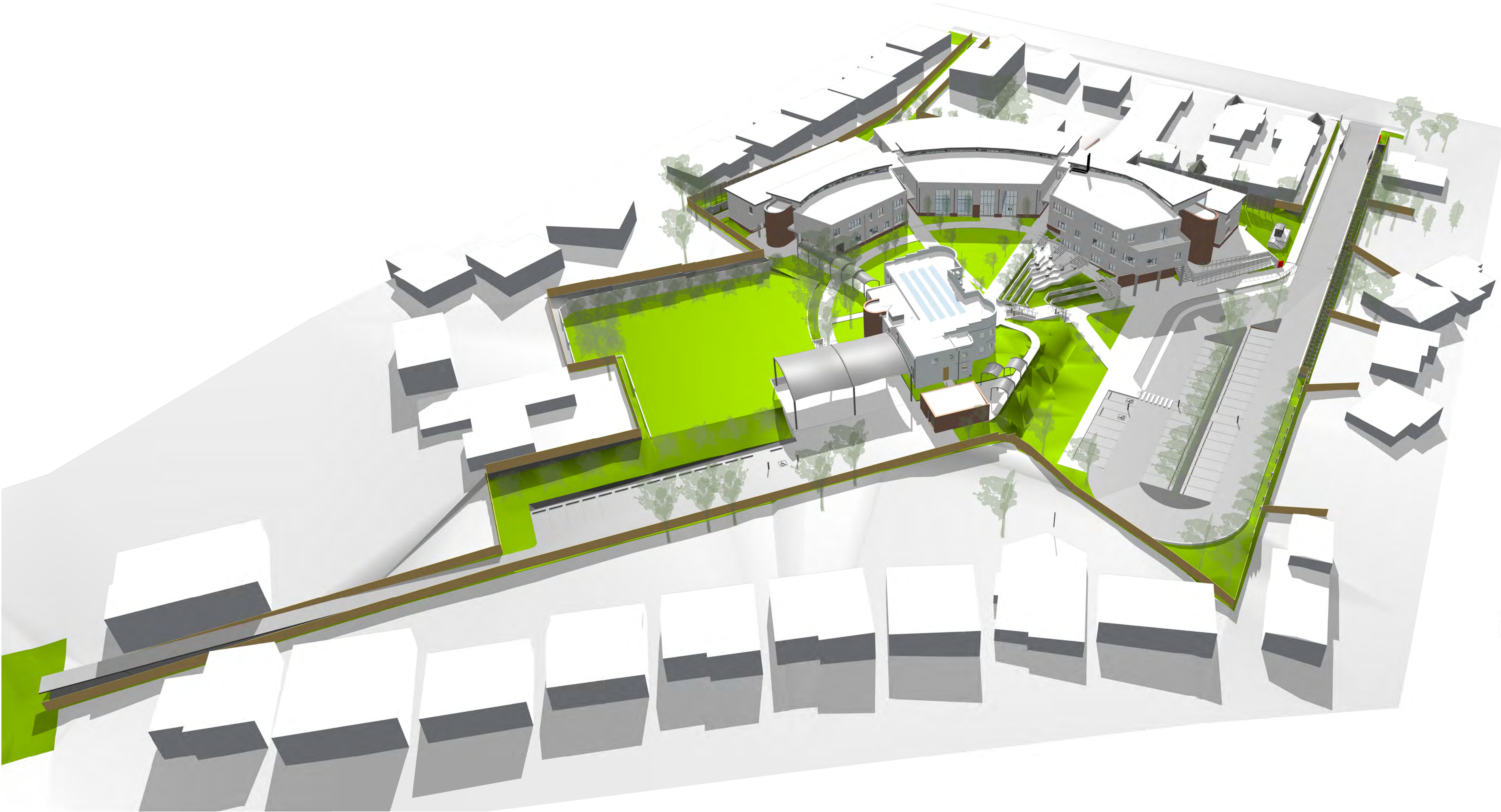
**MARIST COLLEGE
PENSURST - STH
HURSTVILLE SITE
(14C11)**

LOT	4	DP	790242	CITY	SOUTH HURSTVILLE
DATE	12/20/16	FILE	C:\Users\jacobr\Documents\3973_TEN_WF-17_cjacobr@munns Sly Moore.com.au		
DRAWN	AB	CHECKED	CJ	VERIFIED	EI
STATUS					

FOR TENDER REVIEW

1 : 400 @ A1

PROJECT NO.	DRAWING NO.	REVISION
3973	A9005	3



COPYRIGHT © MUNNS SLY MOORE ARCHITECTS 2015
Reproduction of the whole or part of the document constitutes an infringement of copyright. The information, ideas and concepts contained in this document are confidential. The recipient(s) of this document is/are prohibited from disclosing such information, ideas and concepts to any person without the prior written consent of the copyright holder.

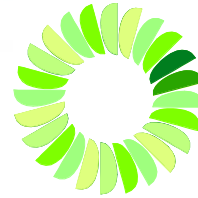
- NOTES
1. Use figured dimensions. Do not scale from drawings.
 2. All dimensions are in millimetres, except levels and drawings to scale of 1:500 and smaller which are given in metres.
 3. Drawings to be read in conjunction with specifications and/or schedules.
 4. Contractor to verify all dimensions and levels on site prior to commencing any work or making of shop drawings, and seek instructions if any discrepancies are found.

3	12/12/2017	UPDATE FOR S.E.E (DA)
2	10/11/17	60% ISSUE
1	16/06/17	ISSUE FOR DA APPROVAL
NO.	DATE	DESCRIPTION

STRUCTURAL + ENVIRONMENTAL

TTW Taylor Thomson Whitting

HYDRAULIC + CIVIL



AJ Whipps Consulting Group
2/101 Union St, McMahon's Point
NSW 2060 Australia
t: 61 2 8923 8444
f: 61 2 8923 8484
sydney@ajwhipps.com.au
ajwhipps.com.au

Where ingenuity flows

BUILDING SERVICES



LANDSCAPE ARCHITECT

Umbaco
LANDSCAPE ARCHITECTS PTY LTD
Suite 104, 283 Alfred Street
North Sydney NSW 2060
T 02 9955 6772
www.umbaco.com.au

CLIENT



MUNNS SLY MOORE architects

MUNNS SLY MOORE ARCHITECTS PTY LTD ABN 30 008 534 049
9 Hall Street PO Box 5093 Lyneham ACT 2602 Australia
P + 61 2 6248 8922 F + 61 2 6248 8300

Nominated Architect Robert Sly FAIA ACT #331 NSW #6712

www.munnesslymoore.com.au

DRAWING

**SITE PERSPECTIVE -
SHEET 1**

PROJECT

**MARIST COLLEGE
PENSHURST - STH
HURSTVILLE SITE
(14C11)**

LOT 4 DP 790242 CITY SOUTH HURSTVILLE
DATE 06/13/17 FILE \\MSMA-ADC\Redirected\Folders\Drawings\My Documents\3973_TEN_WF-17_Discardon@munnsslymoore.com.au.rvt
DRAWN CJ CHECKED CJ VERIFIED EI

FOR INFORMATION

@ A1

PROJECT NO. DRAWING NO. REVISION

3973 A9022 3



COPYRIGHT © MUNNS SLY MOORE ARCHITECTS 2015
Reproduction of the whole or part of the document constitutes an infringement of copyright. The information, ideas and concepts contained in this document are confidential. The recipient(s) of this document is/are prohibited from disclosing such information, ideas and concepts to any person without the prior written consent of the copyright holder.

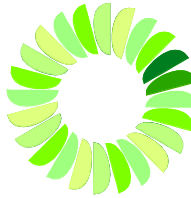
- NOTES
1. Use figured dimensions. Do not scale from drawings.
 2. All dimensions are in millimetres, except levels and drawings to scale of 1:500 and smaller which are given in metres.
 3. Drawings to be read in conjunction with specifications and/or schedules.
 4. Contractor to verify all dimensions and levels on site prior to commencing any work or making of shop drawings, and seek instructions if any discrepancies are found.

3	12/12/2017	UPDATE FOR S.E.E (DA)
2	10/11/17	60% ISSUE
1	16/06/17	ISSUE FOR DA APPROVAL
NO.	DATE	DESCRIPTION

STRUCTURAL + ENVIRONMENTAL

TTW Taylor
Thomson
Whitting

HYDRAULIC + CIVIL



AJ Whipps Consulting Group
2/101 Union St, McMahon's Point
NSW 2060 Australia
t: 61 2 8923 8444
f: 61 2 8923 8484
sydney@ajwhipps.com.au
ajwhipps.com.au

Where ingenuity flows

BUILDING SERVICES



LANDSCAPE ARCHITECT

Umbaco
LANDSCAPE ARCHITECTS PTY LTD
Suite 104, 283 Alfred Street
North Sydney NSW 2060
T 02 9955 6772
www.umbaco.com.au

CLIENT



MUNNS SLY MOORE architects

MUNNS SLY MOORE ARCHITECTS PTY LTD ABN 30 008 534 049
9 Hall Street PO Box 5093 Lyneham ACT 2602 Australia
P + 61 2 6248 8922 F + 61 2 6248 8300

Nominated Architect Robert Sly FASA ACT #331 NSW #6712

www.munnesslymoore.com.au

DRAWING

**SITE PERSPECTIVE -
SHEET 2**

PROJECT

**MARIST COLLEGE
PENHURST - STH
HURSTVILLE SITE
(14C11)**

LOT	4	DP	790242	CITY	SOUTH HURSTVILLE
DATE	06/13/17	FILE	\\MSMA-ADC\Redirected\Folders\Drawings\My Documents\3973_TEN_WF-17_Discardon@munnsslymoore.com.au.rvt		
DRAWN	CJ	CHECKED	CJ	VERIFIED	EI

FOR INFORMATION

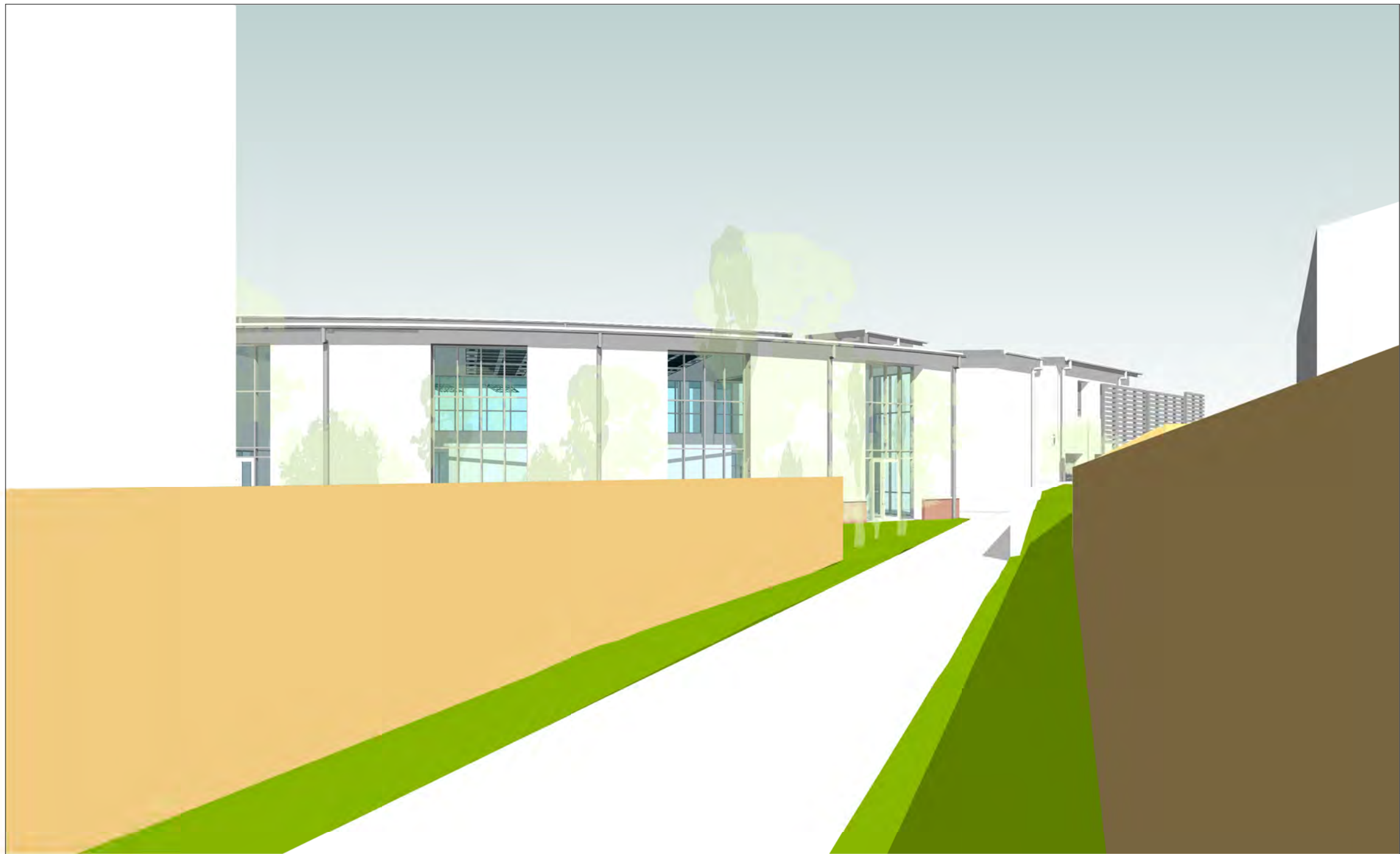
@ A1

PROJECT NO. DRAWING NO. REVISION

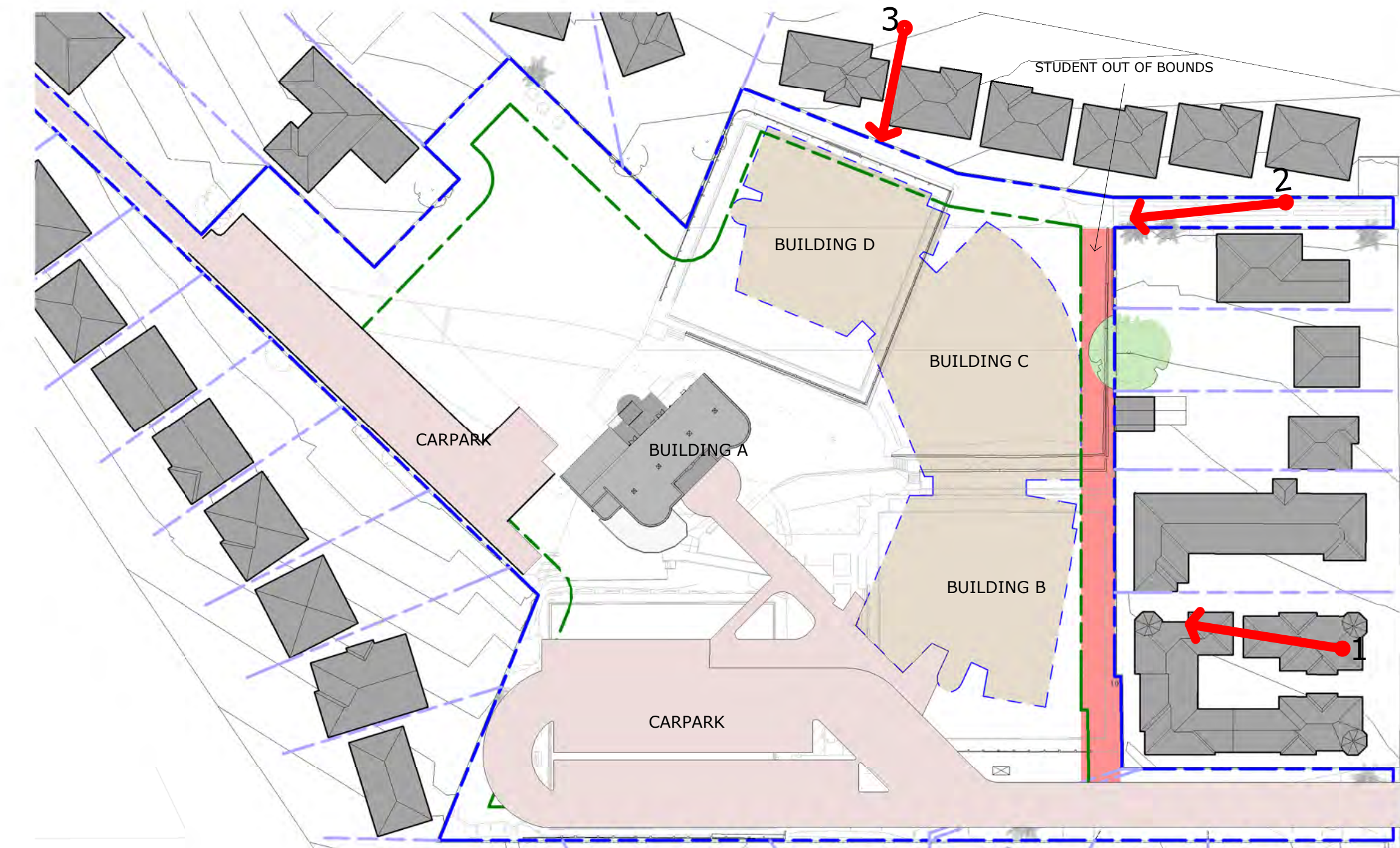
3973 A9023 3



1 3D Neighbours 1



2 3D Neighbours 2



4 SITE PLAN - KEYPLAN 1
1 : 750



3 3D Neighbours 3

COPYRIGHT © MUNNS SLY MOORE ARCHITECTS 2015
Reproduction of the whole or part of the document constitutes an infringement of copyright. The information, ideas and concepts contained in this document are confidential. The recipient(s) of this document is/are prohibited from disclosing such information, ideas and concepts to any person without the prior written consent of the copyright holder.

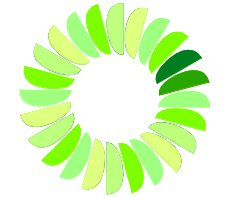
NOTES
1. Use figured dimensions. Do not scale from drawings.
2. All dimensions are in millimetres, except levels and drawings to scale of 1:500 and smaller which are given in metres.
3. Drawings to be read in conjunction with specifications and/or schedules.
4. Contractor to verify all dimensions and levels on site prior to commencing any work or making of shop drawings, and seek instructions if any discrepancies are found.

NO.	DATE	DESCRIPTION
4	12/12/2017	UPDATE FOR S.E.E (DA)
3	26/06/17	RE-ISSUE DA APPROVAL
2	16/06/17	ISSUE FOR DA APPROVAL
1	05/04/17	FOR INFORMATION

STRUCTURAL + ENVIRONMENTAL

TTW Taylor
Thomson
Whitting

HYDRAULIC + CIVIL



AJ Whipps Consulting Group
2/101 Union St, McMahon's Point
NSW 2060 Australia
t: 61 2 8923 8444
f: 61 2 8923 8484
sydney@ajwhipps.com.au
ajwhipps.com.au

Where ingenuity flows

BUILDING SERVICES



LANDSCAPE ARCHITECT

Umbaco
LANDSCAPE ARCHITECTS PTY LTD
Suite 104, 283 Alfred Street
North Sydney NSW 2060
T 02 9955 6772
www.umbaco.com.au

CLIENT



MUNNS SLY MOORE architects

MUNNS SLY MOORE ARCHITECTS PTY LTD ABRN 30 008 534 049
9 Hall Street PO Box 5093 Lyneham ACT 2602 Australia
P + 61 2 6248 8922 F + 61 2 6248 8300
Nominated Architect Robert Sly FASA ACT #331 NSW #6712 www.munnesslymoore.com.au

DRAWING

**SITE PERSPECTIVES -
SHEET 3**

PROJECT

**MARIST COLLEGE
PENHURST - STH
HURSTVILLE SITE
(14C11)**

LOT	4	DP	790242	CITY	SOUTH HURSTVILLE
DATE	11/30/16	FILE	\\MSMA-ADC\Redirected\Folders\Drawings\My Documents\3973_TEN_WF-17_D\Searchon@munnsslymoore.com.au.rvt		
DRAWN	AB	CHECKED	CJ	VERIFIED	EI

FOR INFORMATION

1 : 750 @ A1

PROJECT NO. DRAWING NO. REVISION

3973 A9024 4